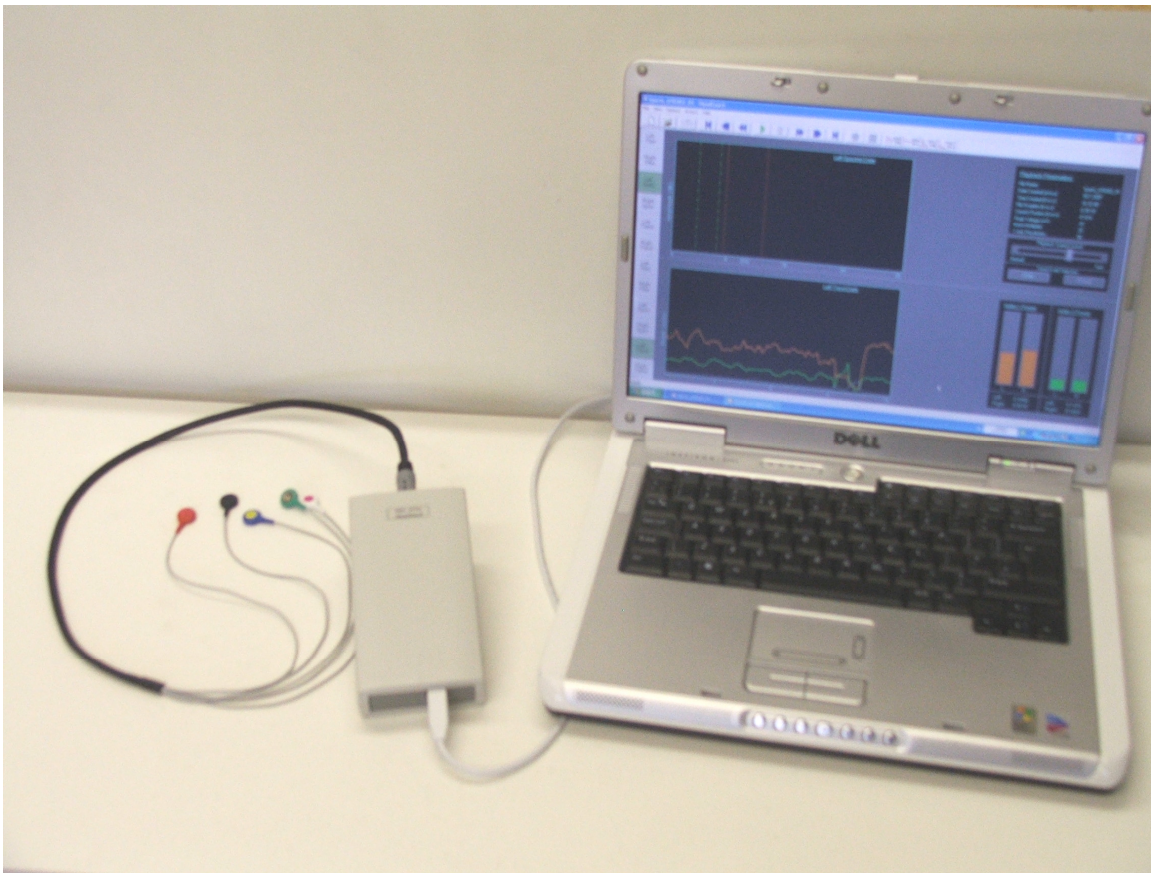


HeadCoach™

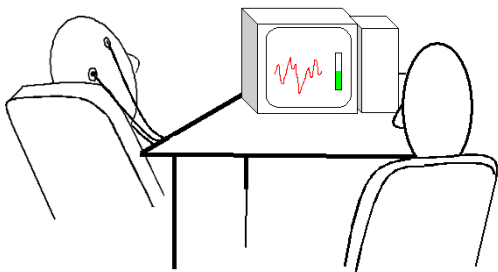
Serious science for neurofeedback therapies



*The therapists' portable EEG brainwave monitor
for direct feedback on mind state
by Alpha-Active Ltd*

What is HeadCoach™

HeadCoach™ is a robust, pocket-sized EEG system specifically optimised to measure brainwaves in the therapy and sports context. Developed in Britain following consultation with professional therapists, sports coaches and university scientists, HeadCoach™ lets the therapist or coach see how the individual's behaviour relates to their EEG recorded at the same time.



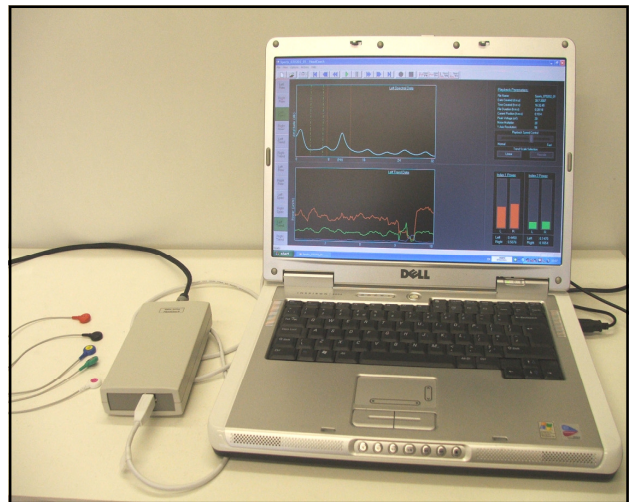
HeadCoach™ main features:

- ◆ Small, portable and simple to use dual (left & right) channel system
- ◆ User-friendly software shows various brainwave frequencies
- ◆ Only needs five easy-to-fit electrodes to see left & right brain
- ◆ Robust design allows use 'in the field' for ambulatory monitoring
- ◆ Gives instant feedback to the therapist with real-time display
- ◆ Simultaneous sound recording option
- ◆ Software data analysis is more robust to movement of user
- ◆ Allows therapist to see correlation between the client's behaviour and their EEG recorded at that time
- ◆ All recordings saved on computer to review and share when required.

Sound Recording Capability

The addition of an optional sound recording feature to the HeadCoach™ allows for the simultaneous recording of EEG and **sound**.

This feature captures sound for event synchronisation and also removes the need for written notes. The therapist, or the user, can speak directly to the microphone to detail events, times or feelings. All this information is stored and can be correlated to the brainwave patterns in the EEG recording.



How can HeadCoach™ help me?

When a person is connected to HeadCoach™, their therapist can monitor their brainwaves in real time. HeadCoach™ provides feedback as to whether the subject is in the desired hypnotic or mind state for maximising treatment efficacy. HeadCoach™ can provide a neurobiofeedback mechanism that the therapist, or the user themselves, can make use of in cessation therapies, pain control, meditation etc.

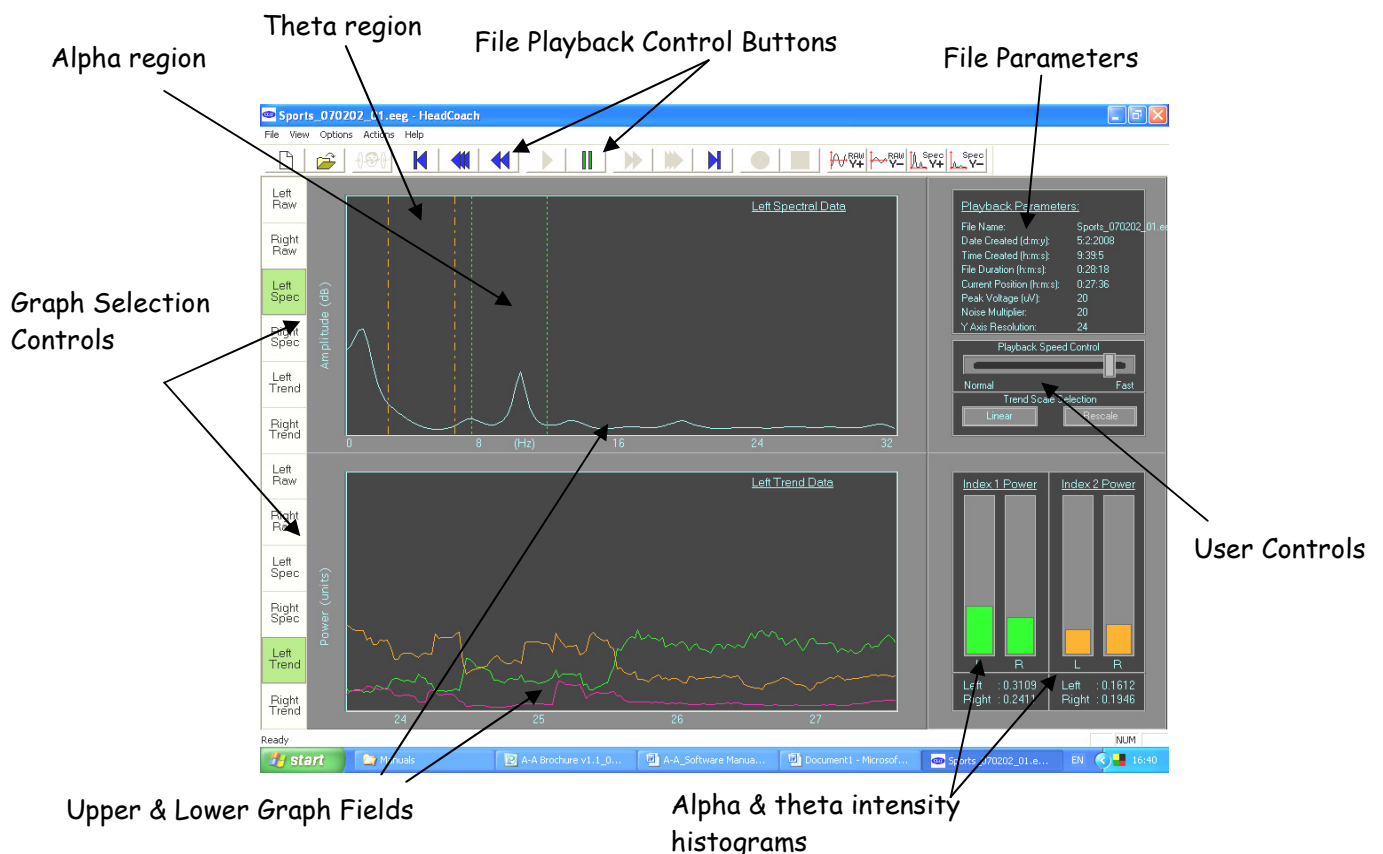
Alpha-Active's *HeadCoach™* builds on patented technology to provide a robust, pocket-sized, simple-to-use system run from your computer.

The system is cost-effective and works well for sedentary couch-based therapy. In addition, because the *HeadCoach™* software is more robust to user movement, it is also well suited to ambulatory monitoring or use with children.

The *HeadCoach™* system is easy to fit and easy to use:

- ◆ Minimal skin preparation
- ◆ Just 5 self-adhesive electrodes
- ◆ Snap-fit electrode connectors
- ◆ A belt-bag to keep the *HeadCoach™* module safe when in ambulatory use
- ◆ Easy to use software with simple 'play', 'rewind' and 'fast-forward' controls
- ◆ Choice of left and right side of head and various user-specified different trace types to view and change without losing the original recorded data set
- ◆ Displays are easy to interpret in real time and in playback mode and can be synchronised with video and other session playbacks.

Typical information the *HeadCoach™* can give you



What is an EEG?

An EEG (electroencephalogram) monitors the electrical activity of the brain. Brainwaves are a measure of a person's brain 'state' or state of consciousness. EEG is a widely used and established technique in both the medical and non-medical fields.

Some Potential Applications of HeadCoach™:

- As an aid to therapists monitoring altered states of consciousness and neurobiofeedback
- To help achieve focus before stage or musical performance, or when making a speech or other 'pressure' presentation
- Helping any individual achieve their personal best when in a challenging situation
- Helping athletes achieve their personal best **consistently**

Specifications:

Summary:	24-bit dual channels for left and right side of head
Output:	Raw signal, brainwave spectrum, trend vs. time for two selectable frequency ranges
Dimensions:	186mm X 100mm X 63mm
Weight:	0.37kg
Power:	USB lead from PC
Consumption:	Less than 500mA
Operational environment:	+0 °C to +40 °C, 35 % to 80 %, non-condensing
Storage conditions:	-30 °C to +70 °C, 15 % to 90 %, non-condensing

Computer Requirements:

- All connection leads and software are supplied with the comprehensive *HeadCoach™* system pack.
- *HeadCoach™* requires connection to USB port of a computer to operate.
- Compatible operating systems: Microsoft Windows XP™, Vista™, or Apple Mac™ with Microsoft Virtual PC™.
- Computer not supplied.



"I routinely use the *HeadCoach* EEG to help in my diagnosis and treatment of pain, including psychogenic headache, and in the control of fear of dental treatment." Professor Mark Griffiths MBBS, FDS, RCS (Eng), BDS, Eastman Dental Institute, University College London.

"The *HeadCoach* neurofeedback system has been invaluable to me in the monitoring of altered states of consciousness during therapeutic work with clients, including hypnotherapy, guided imagery, pain management and stress relief." Dr Peter Grainger, Oakspring Clinic, Clevedon, Somerset.

Manufacturer:

Alpha-Active Ltd
 2 Devonshire Court, Heathpark,
 Honiton, Devon, EX14 1SB, UK
 Tel: +44 (0)1404 42455
 Fax: +44 (0)1404 41455
 e-mail: eeg@alpha-active.com
 Web: www.alpha-active.com
 Registered in England No. 4190552

Or contact your local supplier:

--